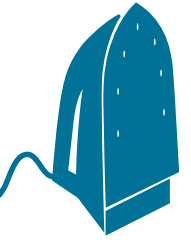


Quilters' Press

Official Publication of the Tri-City Quilters' Guild

P.O. Box 215 • Richland, WA 99352



Vol 41 No. 6

November - December 2021

www. tcquilters.org

■ QUILT SHOW NEWS!

The color of the changing leaves gives us another beautiful palette for a quilt. I hope you are enjoying making your colorful quilts for the 2022 Quilt Show March 25-26.

I HAVE EXCITING NEWS! Dee

Leigy has agreed to be the Quilt Show Co-Chair! Thank you, Dee! We are pleased to have you working with us. The Quilt Show team met in

Next Quilt Show Meeting
2 pm Sat, Jan 8, 2022
Everyone Welcome!

September and are raring to put on a fabulous quilt show after a two-year hiatus. Lots of good ideas, lots of team members helping new team members and everyone willing and happy to help out. If you'd like to be a part of this team, please contact me: genevacarroll@yahoo.com. I promise, you will have so much fun!

Between fundraisers, special projects, and the challenge, there's a lot to choose from! Barbara Minton is handling the Postcard fundraiser (pg 7) – check out her helpful hints; Cathy Jackson is taking care of the Potholder fundraiser, taking pairs of potholders and giving Insulbrite at meetings. To compliment all the color, there's our Black, White and One Other Color Challenge (pg 9). And create a red and white quilt for the Guild's Ruby Anniversary (pg 9)

Our next Quilt Show meeting will be at White Bluffs Saturday, Jan 8, at 2 pm. Everyone is welcome! We'll be getting down to the nitty gritty of the final planning stages of the Quilt Show. Please mark your calendars and join us!

I wish you happiness in this beautiful Holiday Season.

— Geneva

Caution: Stories Under Construction

I'm wishing I could end my series on storytelling with Paul Harvey's sign-off "And now you know ... the rest of the story." But you don't and I can't. We are still living it.

A recent walk on the web introduced me to Laurie Anderson, who has based her career on the fact that we are all, always, mythologizing ourselves. She is a lot like me – born in the late '40s in Illinois, interested in American culture and the verbal environment. Unlike me, she is famous, an avant garde multimedia performance artist whose career has been "an attempt to tell and retell the American story."

She observes that our "coherent and simple" national narratives no longer make sense, and we are in "story limbo." Will we be able to accept an incoherent and complicated story? If we don't, she foresees apocalypse. The collapse of civilization. The possibility of human extinction. And then, she asks, "What stories will be possible when everything is gone? Can we tell a story if no one is listening?"

Stories grow from the ground up – from the bedrock of physical facts in the material world; the words that express them we "conjure in our minds"; the word yellow, she explains, is a "memorial to the color." I love how her expression invokes reverence and respect and a retrospective community. That is where our own storytelling needs to be – tethered to the sights and sounds, smells, tastes, and touches that we have experienced personally – not floating in the thin atmosphere of generalization and opinion and prediction.

And while we speak these very personal details, we need to seek others' very personal details, so we can eventually agree and compromise. It is difficult. For respite and renewal, we can quilt. But that can't be all we do.

~ Laurel

President's Message



Laurel Sutton
2021 Guild
President

Find holiday warmth, cheer, sales at White Bluffs

Ignore the siren song of online merchants on Thanksgiving weekend: shop local and support an asset to the quilting community: Friday Nov 26 and Saturday Nov 27, White Bluffs Quilt Museum will make ALL of its fabric donations available at 25% off the usual \$6/yard price. Also for sale – a large selection of donated books for \$1 each and a collection of period costumes for American Girl dolls (all thoroughly researched, sewn, and completely, cleverly accessorized by Sandy Moroney).

Saturday Dec 4, White Bluffs hosts its traditional holiday gathering from 2 to 4. The exhibit of Storytelling quilts will be augmented with some seasonal pieces to create a festive mood, and Christmas cookies and punch will be served. Tickets



White Bluffs

QUILT MUSEUM

for the Everything Raffle (a collection of sewing supplies and holiday gifts, which outgrew its gigantic basket and took up residence in the display case) can be purchased until 3, when the winner will be announced.

Inside this issue

President's Message	1
Quilt Show News	1
White Bluffs News	1
Briefs	2
Board & Committee Chairs	2
SEW-IQ Debut	3
Allied Arts Call for Quilts	3
Raffle Quilt '23 Update	3
Finley Retreat	3
Finding Light in Dark Times	4
Story Collage Reminder	5
Show Quilt Registration Info	5
Project Linus Schedule	5
Money, Budget, Officers, etc	5
Library News – New Books!	6
Postcard Project	7
Local Stores & Classifieds	8
Advertising	8
Birthdays	9
Red & White Quilts Reminder	9
Black & White Challenge Reminder	9
Allied Arts Exhibition Registration	10
Story Collage Refresher	11
Meeting News	12



THOSE WHO STITCH TOGETHER STICK TOGETHER — Nothing like a pandemic to make us appreciate the simple pleasure of each other's company. — Needle pkg cover

Send corrections, ideas, photos, feedback to Carol O'Callaghan at oc.carol@gmail.com. Like to design and looking for a new gig? Newsletter editor is up for grabs! It's been fun and I'll be keeping it up for the time being, but it's time to move on! — You'll love it! Just contact the board.

BRIEFS

■ How Old is That Quilt?

The next exhibit at the White Bluffs Quilt Museum is "How Old Is That Quilt?" Quilts from the museum's collection will be featured, but we'd like to show more. If you have a quilt from the 1950s, 1960s, 1970s, or 1980s, or even the 1990s that you could share for the exhibit, please contact Laurel Grove before Dec 18 (email: lkqprs@hal-pc.org). Note: careful, that's a hyphen, not a period in hal-pc.

■ Show It Off Early!

Have a red and white quilt ready to show off for the Ruby Celebration? (see pg 9) If you want to share it early, send a photo to Dianne Cramer deekwlt@aol.com and be a star on our Facebook page.



■ Infinite Little Gallery

Did you know that hundreds of thousands of quilting ideas and masterpieces are literally at your fingertips with Instagram? Consider adding the guild's account [@tricityquiltersguildwa](https://www.instagram.com/tricityquiltersguildwa) to see what we're seeing, and please use the hashtag [#tcquilter](https://www.instagram.com/tricityquiltersguildwa) in your own quilt posts to give searchers a way to gather our members' accomplishments together. Download the app from your playstore and try searching [#artquilts](https://www.instagram.com/tricityquiltersguildwa), [#modernquilts](https://www.instagram.com/tricityquiltersguildwa), [#uniquequilts](https://www.instagram.com/tricityquiltersguildwa), whatever you can think of!



■ Holiday Skillbuilders

Skillbuilders will skip the 4th Sundays in Nov and Dec, but there are still two to look forward to mid-month:

- Sunday, Nov 14 1-4 pm: Linda Weir will teach "Improv Trees."
- Sunday, Dec 12 1-4 pm: Cheryl Garrison will demonstrate "Gadgets and Gizmos."

■ Nov & Dec Programs

At November's meeting, create "Make & Take Christmas Gifts." No meeting or program or party in December, but maybe next year! We can't find anywhere to gather in both the day and evening. Enjoy your families and friends!

■ Shop Hop Jan 2022

The eighth annual celebration fundraiser for White Bluffs Quilt Museum will again occupy a whole week instead of a single day – from Saturday, Jan 22 to Saturday, Jan 29.

Stores in the Tri-Cities, Prosser, Walla Walla, Athena, and Stanfield will be invited to participate with special deals and discounts for passport holders; they will all sponsor drawings and select winners for \$10 gift certificates Jan 29.

Passports – \$10 each – go on sale at WB Saturday, Jan 8. They will also be available at member meetings on Monday, Jan 17.



WHO DO I CONTACT?

Communications	Dianne Cramer
Website	Nancy Graves
Facebook	Dianne Cramer
Facebook	Ginny Hildreth
Newsletter	Carol O'Callaghan
Community Service	Cyndy Underwood
Education	Jo Matthias
Workshops	Cheryl Garrison
Library	Cheryl Garrison
Quilt Show	Geneva Carroll
Show Co-Chair	Dee Leigy
Member Services	Ardith Eakin
Retreats	Ginny Coffman
Friendship Groups	Carol Capelle
Sunshine	Sandy Moroney

Tri-City Quilters' Guild 



EXECUTIVE BOARD

OFFICERS

Each officer has 1 vote;
President only votes to break a tie

President	Laurel Sutton
Treasurer	Nancy Graves
VP AM	Judy Urrutia
VP PM	Jean Keaveney
Guild Secretary	Nancy Green

WWW.TCQUILTERS.ORG

 [facebook.com/tcquilters.org](https://www.facebook.com/tcquilters.org)
 [@tricityquiltersguildwa](https://www.instagram.com/tricityquiltersguildwa)

Guild makes new friends, raffle money at first SEW-IQ in Kennebec

A longtime dream came to life On Sept 25, for Ginny

**Fall show realized
for a favorite
local shopowner**

Hildreth, owner of Discount Vac & Sew and supporter of the Guild. Ginny had wanted to sponsor a one-day outdoor quilt show in the Sisters mold – and she did it this year!



GINNY HILDRETH

In collaboration with Historic Downtown Kennebec Ginny hosted the first edition of SEW-IQ (South-

eastern Washington Inspired Quilts).

The weather was wonderful, and other elements of the monthly alfresco event (woodworkers club, food truck, and other vendors) drew a sizable crowd. Business was brisk for Nancy Green, selling raffle quilt tickets, and Ardith took in membership money.

Thanks to Ginny for the courtesy booth and to her allies in collecting, hanging, taking down, and returning quilts for the inaugural exhibit, furthering the cause of quilting in our region.

Fifth Tues CS Sewcial to start piecing 2023 quilt

On Tuesday Nov 30 from noon to 6, the Community Service tribe will set up again at White Bluffs Quilt Museum for collaborative charity stitching. Our efforts at this session will benefit the Guild itself.

A year ago the newsletter proposed a pattern, Sew Many Scraps, to succeed Serendipity as our raffle fundraiser. It was conceived as a collaboration, and many of you have contributed 1.5" strips. But covid's uncertain course and the cancellation of the 2021 quilt show stalled the project.

Now it appears that someone will win Serendipity next March, and we'll need another raffle quilt to debut next June. Since it's an effort for the common good, the project has been adopted by the Community Service committee.

Allied Arts to host our biennial guild exhibition

It seems like just a minute ago we mounted our last show in the Gallery at the Park. It was the Before Times, and things were clicking along in their traditional sequence. Even though we cannot confidently say that these are the After Times, the traditional sequence has resumed.

Deb Snider and Laurel Sutton are currently soliciting items for the exhibition. They expect some entries from their Story Collage project, where there are size parameters and text requirements (see pgs 5 & 11) The bulk of the exhibition, though, will be unconstrained as usual, with no over-arching theme or size restrictions. Submit up to three pieces you are proud of or pieces where you tried something new or pieces that represent trends in quilting or pieces you are willing to sell. Quilts shown

in this exhibition can also be registered at a later date for "The Magic of Color," our big show in March.

Make your decisions quickly! Deb, who has consented to serve as registrar, needs your list by Monday Nov 29, so she can build a spreadsheet to submit to the Gallery a month in advance of our show. The registration form is on page 10. Also [here](#).

Deliver the quilts on your list to Allied Arts on Monday Jan 3 between 10 and noon. Then stay to help hang the exhibition.

On Sunday Jan 9 from 1-3, the Gallery will host a public reception – a good opportunity to meet and greet friends, cultivate prospective quilters and new Guild members.

The quilts will come down on Sunday Jan 30 between 10 and 2.



New and familiar faces gather at Finley Grange

About 20 people gathered at the Finley Grange Oct 26-28 for some seriously fun stitching and catching up. Among the dozens of quilts under construction was one made by Cindy Smoot for her sister who is in the medical field – pieced with bright, colorful scrubs! Participants shared sewing tips, techniques, and even a special recipe. Suzie Stacey made cinnamon rolls that wowed the crowd and by popular demand gave a live demonstration at the end of the last day. Tanya Bunch (left) focuses on an ambitious red and white quilt. (Sorry not sure of the names above.) The retreat was organized by Smoot and Carol Cappelle. Another is planned for spring; stay tuned – fun is unlimited but space is.

Photos by Dianne Cramer

Finding your "Bright Idea"

Where does your light come from when things are feeling dark?

BY JAN YANCEY
Guild Member

I've had kind of a hard month. We just came home from visiting our youngest daughter who lives in Bellingham. I miss her so much. And then my 4th son and family just moved from here to South Carolina a few weeks ago, taking four of my grandkids with him. I've been having some health issues too, so all of it was making me feel a little down. Then I got an email telling me that my good friend, Marian Rexus, passed away from COVID on Oct 10. Marian had been the owner of Fantasticks Quilt Shoppe in Kennewick. I worked there with her for many years until it closed. I just felt so sad and worn out by all of this. Sometimes life just bulldozes the light right out of you and leaves a dark hole in your heart, doesn't it? But what do you do to clear away the shadows?

This all reminded me of an important principle of light I discovered many years ago. I happened to be watching snow melting on my deck one cold and frosty morning. You'd think that melting snow would be a slow, boring process. But no! It was actually happening very fast and it was so interesting! The railings and posts of the fence had cast long gray shadows across the deck and the snow was dull and quiet in those areas. But in the areas where the sun was hitting the snow it almost seemed alive with movement. The ice was warming and changing back into water right before my eyes. At the very moment it changed it reacted like a prism, sending out flashes of colored sparkles! Gradually, the warming and melting effects of the light reached even into the shadowed areas, eventually clearing the whole deck. There were many lessons I learned from this experience. Some related to painting, and others related to life in general.

Light is inspiration, it generates energy and brings warmth. Light is positive and healing, changing everything it touches. Light moves out the darkness whether it's in snow, in hearts, or in your mind. It just works that way no matter how or where you shine it. And it has cleared out many a dark, cobweb-filled corner in my life. That's for sure.

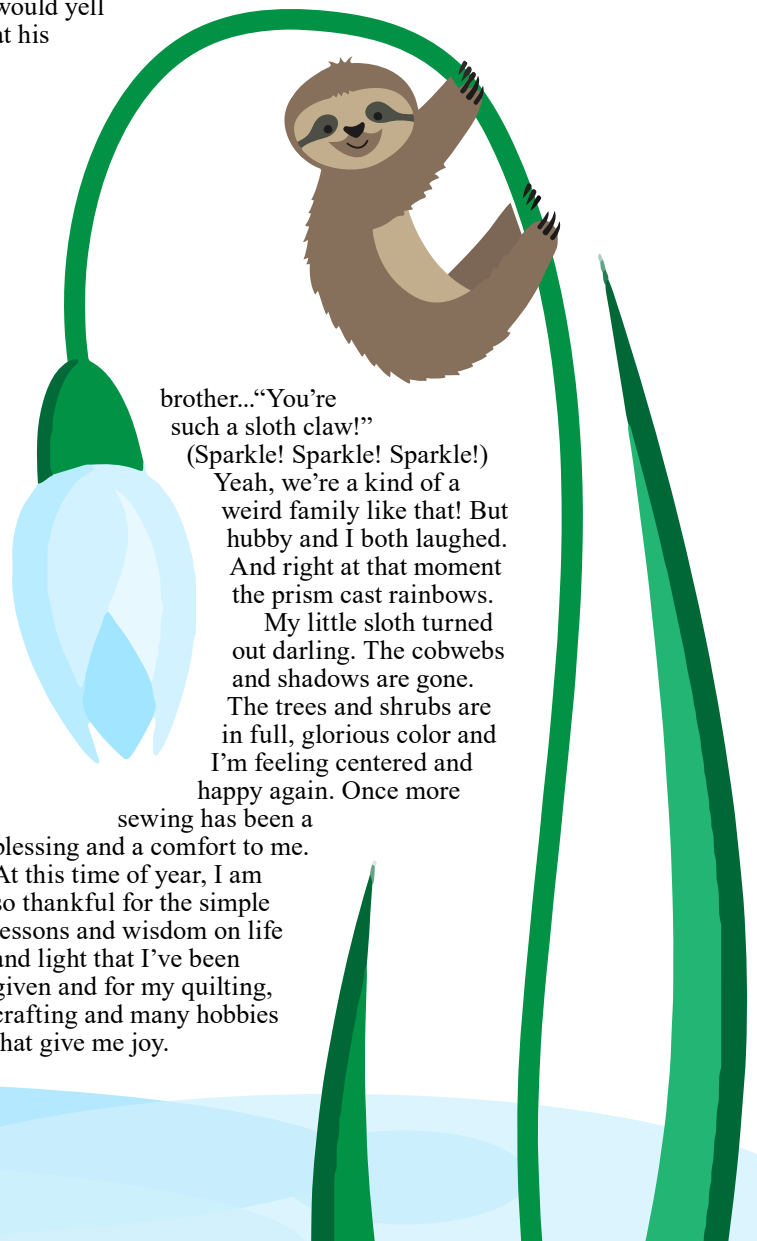
So I needed some light to clear out the shadows in my heart and mind. Do you know what does that for you? For me it's a design challenge! In my search for something to create I came across a little photo of a sloth that intrigued me. I have a granddaughter who loves sloths so they catch my eye these days. It



My sloth.

must have been meant to be because I came across a little box with a picture of a sloth on top of it on a clearance table! A perfect package for my sloth project! I took it to be a sign I was on the right track. Anyway, after several versions of sloth-design I finally got it right and whipped out a little body and four legs from a scrap of tan wool. (Hey! Is that a ray of sunlight I see?) I only had one little glitch that slowed down the sloth production!

What could I make the tiny little claws out of? They needed to be about 1/2 - 3/4 inch long, white, curved and grouped three to a paw. Hummm... I had to think on this for a couple of days. I finally settled on some little white plastic rings leftover from the Roman shades I'd made earlier in the summer. They were going to be perfect! (It's starting to get warm!) I cut them in half, hot glued three together, then sewed them into the ends of the arms. "I have sloth claws!" I loudly exclaimed with a happy cheer just as hubby walked by my craft room. He leaned in and said, "I'm sorry ... is that a good thing?" Either way, it sounded to him like a Harry Potter curse had been slapped on me! Or at the very least, it would definitely be something one of my boys would yell at his



brother... "You're such a sloth claw!"
(Sparkle! Sparkle! Sparkle!)

Yeah, we're a kind of a weird family like that! But hubby and I both laughed. And right at that moment the prism cast rainbows.

My little sloth turned out darling. The cobwebs and shadows are gone.

The trees and shrubs are in full, glorious color and I'm feeling centered and happy again. Once more

sewing has been a blessing and a comfort to me. At this time of year, I am so thankful for the simple lessons and wisdom on life and light that I've been given and for my quilting, crafting and many hobbies that give me joy.

Story Collage Project nears completion

Did you collect fused fabric motifs last summer from Deb Snider's downsizing donation? Did you attend workshops (Evolution of an Art Quilter, Fearless Creativity, Design B.O.O.T. Camp, or Brainstorming the Word Stories)?

If yes, read on.

Are your quilt and its story finished and ready for debut at the Gallery at the Park? If no, read on.

Deb and Laurel Sutton have reserved White Bluffs Quilt Museum on Sunday Nov 7 from 1 to 4. Come and consult them for free. They will provide commiseration, motivation, shoulders to cry on, design or construction advice or help writing and editing.

Stitching can continue until the eleventh hour. And Laurel can wait for your written stories until Monday Dec 27. HOWEVER, Deb needs your registration by Monday Nov 29; use the Gallery at the Park form on page 10 or download it from the website.



Show quilt registration is approaching. Are you ready?

The quilt show committee is working hard to bring you our 2022 quilt show. We will again be using the online quilt registration interface, developed for the 2020 show, to register quilts in the show.

Once again you will be asked to enter your email and create a password which you will use for all your quilt entries. There will be several categories for registering your quilt, including "The Magic

of Color," "40th Anniversary," "Black & White Challenge," and workshops, collaborations, and other challenges.

A category for

2020's "Focus on

the Stars" will

be included

so we can

finally

show those

quilts that

never got

their chance

to shine.

We are

expecting a large number of quilts for the 2022 show, so the guild will use a ranking system if we have more quilts than we can hang. Members will be asked to enter their quilts in ranked order, i.e., the first quilt you enter will be the highest rank among your quilts. If we have to remove quilts, the last one you enter will be considered your lowest ranked quilt and could be selected for removal.

Registration will open on Jan 1, 2022, at 12:01 am. Start planning now to prepare for quilt registration. Please contact Nancy Graves, at nancyjg@charter.net if you have questions.



■ Project Linus News

Join Project Linus Quilters as they hold these open workshops. Bring a lunch!

- Sat, Nov 6 4 10-2 MABD Quinault Baptist Church
- Sat, Dec 4 10-2 Batelle Workparty at Quinault Baptist Church
- Sat, Jan 1 10 am Batelle Workparty at Quinault Baptist Church



Find more information about the organization at projectlinus-tc.org/.

Money matters: mulling budget, early vote

Starting in 2023, annual dues will increase to \$25. To soften the blow, the Board has approved a sort of scholarship/helping hands fund to give financial aid. Membership chair Ardith Eakin explained the situation at the October meetings, and donations are already rolling in.

Fundraising came up as the Board contemplated the Guild budget for 2022. We have lost two years of revenue from the quilt show, raffle quilt, and silent auction. Dues are down because members have forgotten or fallen away during the 15 months we could not meet. In addition, we had some accounting hiccups – now corrected – that prompted the Board to pay for bookkeeping expertise.

In order to compensate for the loss of income, the budget will reduce expenditures in the areas of education and member services.

The Board will approve the budget in November. Members, too, may have to

approve it in November since covid restrictions are making it difficult to find a venue for the annual meeting in December.

New executives will guide Guild in 2022

Balloting at the October member meetings elected these officers to the Board:

- President Ardith Eakin
- AM VP Judy Urrutia
- PM VP Jean Keaveney
- Secretary Cheryl Garrison
- Treasurer Nancy Graves

Be ready to support their endeavors for the good of the cause. Volunteers are also needed on the Board. the Education and Communication coordinators are wanting to move on. You will have lots of help to learn the duties of these positions.

LIBRARY NEWS

New Books

IN THE HOUSE



Just One Charm Pack Quilts by Cheryl Brickey

Sew colorful and bright quilt projects, each using only one charm pack, one extra fabric, and a background fabric.

Big Book of Quick to Finish Quilts by That Patchwork Place

Need fresh ideas for a community service quilt, a quick quilt for a last-minute gift, or a small, fun-to-finish quilt project to take on retreat? This book has 54 patterns from large lap quilts to table toppers to spark your creativity.



Crumb Quilting by Emily Bailey

Tiny fabric scraps or 'crumbs' don't have to end up in the trash - you can learn how to use these crumbs to create 15 beautiful quilts and quilted projects to bust your stash. Learn how to quickly piece together small scraps to create larger pieces of 'crumb fabric' as well as tips and tricks for how to group fabric colors and prints in order to get the best results.

DID YOU KNOW? You can return books to White Bluffs Quilt Museum when it is closed! Just put the books in the mail slot on the Torbett side of the building.

Suggestions for the library?

Contact Cheryl Garrison 616-813-6520 or clock902@aol.com.

The Library is located at White Bluffs Quilt Museum 294 Torbett St, Richland

Hours Fri 10-4, Sat 10-4



Recent Quilts

Most of my recent quilts are made using my hand-dyed fabrics (cotton and silk) and are machine pieced and quilted. Dyeing techniques include vat dyeing, low-water immersion dyeing, indigo, and water-soluble resists.

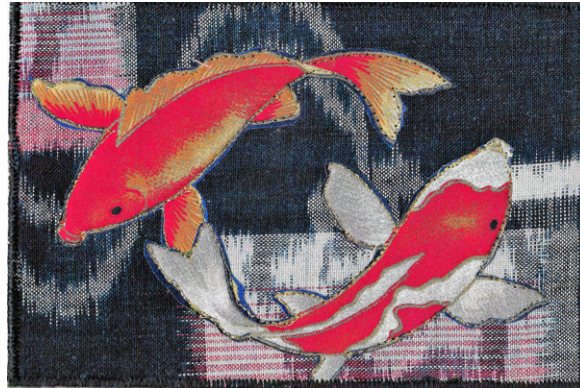


Take a Look

Get acquainted with Lynn Koolish before we meet her in March at our quilt show. You'll find eye candy in her galleries (she dyes fabric, and designs her quilts from photographs or improvisational piecing). Find the instructional books she might bring with her. If you fell in love with boro in August, look at the description of her class, Inspired Stitches, then click to see class samples and student work. There's a lot to ponder.

Postcard Project for 2022

The guild invites members to make and donate fabric postcards as a fundraiser for the 2022 Quilt Show. Postcards will be sold at the show for \$8.



From fish to fowl! Barbara Minton's appliqueed koi and Dianne Cramer's little tiny flying geese comprise these two fabric postcards which will be part of the show's fundraiser.

BY BARBARA MINTON, Postcard Project Coordinator

We are reminding guild members to make and donate fabric postcards as a fund raiser for the 2022 Quilt Show. Postcards will be sold at the show for \$8. YES, this is a change. Numerous people have expressed the opinion that the Postcards are worth more than \$5. Please bring your completed postcards to the next guild meeting and we will post pictures on Facebook or other guild media sites.

Also at the next meetings, I will provide 4"x 6" pieces of Peltex and postcard backing material. However, don't hesitate to use what you have on hand. You can use cardstock for the middle layer. If you have any questions, call or text me at 509-392-1684, or email mintonba@hotmail.com.

Two November work groups to help inspire, share and produce!

POSTCARD SPECS:

- Postcards must be 4"x 6" and no thicker than 1/4 inch
- Postcards MUST consist of at least 3 layers
- A decorated top layer of fiber: fabric, silk paper or other textile fiber
- A middle firmer layer such as "fast2fuse," Peltex, Timtex, or cardstock
- A backing of muslin or light-colored solid fabric** that can be written on
- ** A PDF file with 4 postcard backing designs can be downloaded from the TCQG website and printed on fabric. If you cannot print to fabric, there will be options available.
- Must have a clean finished edge, like a zigzag stitch, satin stitch, or a narrow binding.
- Write your name and date on the back of the card in ink.

This is a chance for us to experiment on a small scale with foundation paper piecing or different surface design techniques, such as inks, paints, Shiva sticks, photo printing on fabric, stamping or even just some crazy quilting. Each postcard can be a mini-Art Quilt.

And now you ask what would someone do with a fabric postcard?

- Mail (extra postage likely required)
- Start a Collection
- Stitch to the back of denim jackets
- Stitch to a pillow
- Frame
- Gift to someone special
- Attach to bags or other garments
- Frame!

POSTCARD FABRIC ART WORKGROUPS

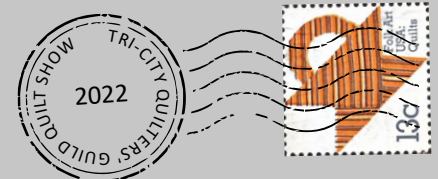
- WEDS Nov 3 1-4 pm
- WEDS Nov 17 1-4 pm
- White Bluffs Quilt Museum
- **Items supplied:** 4"x6" pieces of Peltex, printed postcard back material, and pre-fused pieces of fabric (courtesy of Deb Snider). We can use the irons and sewing machines at White Bluffs.

This is a chance for us to experiment on a small scale with foundation paper piecing or different surface design techniques, such as inks, paints, Shiva sticks, photo printing on fabric, stamping or even just some crazy quilting. Each postcard can be a mini-Art Quilt.

Others Supplies you may want to bring and share:

- A small piece of white or beige fabric for the postcard back. A 9" x 7" will make 2 backs
- Small pieces of colorful fabric or fabric with small prints
- Unusual fabric scraps like silk, silk paper, or old scraps of vintage handkerchiefs or linens,
- Ribbons/laces/embroidery floss/perle cotton
- Basic sewing supplies like thread, pins, scissors.
- Small seed beads, size 11 or delicas.
- And most of all, your CREATIVITY AND IMAGINATION.

Send questions or suggestions, to Barbara Minton by phone or text 509-392-1684 or e-mail at mintonba@hotmail.com.



CLASSIFIEDS & LOCAL SHOPS

FOR SALE

Suzy Q 8'4" purple powder-coated steel quilting frame for domestic machine

Asking \$200 • Dimensions: 106" x 38"
Folds for storage to 106"x38"x12"
New canvas leaders (8') with zippers;
batting bar; 6 side clamps
For more info about the product visit
suzyqquilter.com/(<http://suzyqquilter.com/>), click on "Suzy Q Frame"
Contact: reisa.ozanich@hotmail.com,
or 509-521-5061.



Cyndy Underwood reports that we have distributed 327 quilts so far this year.



CRAFT WAREHOUSE

7411 W Canal Drive, Kennewick
509-783-9663
craftwarehouse.com

SANDY'S FABRICS AND MACHINES

24 N Benton, Kennewick
509-585-4739 (ISEW)
sandysfabrics.com

FABRIC 108

5215 W Clearwater Ave, Ste 105, Kenn.
509-586-0108 fabric108@yahoo.com
www.fabric108.com

JANEAN'S BERNINA

6303 Burden Blvd in Pasco
509-544-7888
janeansbernina.com

THE SEWING BASKET & GIFTS

1108 Wine Country Road, Prosser
509-786-7367
prossersewingbasket.com
Ask about discount for TCQG members.

DISCOUNT VAC AND SEW & FABRICS

119 W 1st Ave, Kennewick
509-586-1680 discountvacandsewwa.com
Ask about discount to TCQG members on
regularly priced fabric.

QUILTMANIA

1442 Jadwin Ave, Richland
509-946-7467 (PINS)
Email: quiltmania@verizon.net
FB: [facebook.com/quiltmania01](https://www.facebook.com/quiltmania01)
Ask about discount to TCQG members on
fabric and notions.

ALDER AVENUE QUILTING
www.alderavenuequilting.com

Debbi Trevino
Professional Machine Quilter/Instructor

1857 Alder Avenue
Richland, WA
99354
509.943.0383
509.554.4443 cell
alderavenuequilting@gmail.com

Need (free) materials to complete a Guild project?
Check out the **GUILD CLOSET!** Pick from a rainbow of colors to create a top, take home a kit, or finish one with quilting or binding. Fabric donations are welcome.
229 N Fruitland, Kennewick — 509-586-7335
(Please call ahead: Kathy Kaser-Nichols' office)
• Kits Available through Laurel: •
509-420-4322 or coversincolors@gmail.com

Printing & Advertising Information for Quilters' Press

- **Quilter's Press:** published six times/year by the Tri-City Quilters' Guild
- **FOR PAID ADS:** Send payment to Tri-City Quilters' Guild Treasurer at PO Box 215, Richland, WA 99352
- **Subscription:** (6 issues/year) \$10.50 per calendar year, or included in the annual membership dues.
- **Send to Editor (in writing):** your comments, information, articles, announcements. Future events for all quilt groups published free of charge. Editor: Carol O'Callaghan 509-289-9065 oc.carol@gmail.com
- **Advertisements:** TCQG members receive one free personal advertisement (business card size) per year. Business Advertisements: quilt-related shops, fabric shops, and persons who operate a home-based quilt related business. Rates are listed at right. Display ads need not be camera ready.
- **Deadline for Newsletter Input:** 20th of each month.

Quilters' Press Advertising Rates Per Issue

Business Card	\$10 non-members — \$5 for members
Classified	\$1 per line - \$5 minimum (same for members)
Quarter Page	\$20 non members — \$10 for members
Half Page	\$40 non-members — \$20 for members
Full Page	\$80 non-members — \$40 for members

TCQG members may place one free business card size ad per year.

NOVEMBER

Deb Bone-Harris
 Cheryl Booth
 Geneva Carroll
 Collene Dunbar
 Diane Fleener
 Tina Foley
 DeeAnna Galbraith
 Judy Gelhaus
 Kate Giever
 Marianne Goble
 Kitty Neill
 Flo O'Leary
 Lindell Pederson
 Pam Pelly



Nancy Pruitt
 Jennifer Rooney
 Roxie Ross
 Sharon Schmidheiser
 Cyndy Underwood

DECEMBER

Val Alderson
 Nansi Bainard
 Sandra Ferland

Susan Giddings
 Joan Lund
 Lisa McGee
 Joan Merz
 Elsa Moore
 Heather Otte
 Pamela Russell
 Laura Sawyer
 Charlotte Scott
 Barbara Sherrill
 Ellen Sly
 Cindy Smoot
 Debbie Welch
 Marilyn Wilbanks

*Happy Birthday
 to You!*

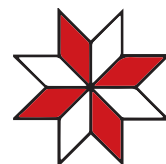
*Please remember to bring snacks to the
 meeting if it's your birthday month.
 Thank you!*

Candy Crandall • Longarm Quilter
Candy's Quilts & Things



509-531-8550
 68403 NSR 225
 Benton City, WA
 candysquiltsandthings@gmail.com

RED and WHITE



Celebrate the Guild's **Ruby Anniversary — 40 Years!**
 — by entering a red and white quilt in the 2022 show.
 Help create a collection of red-and-white quilts that
 will shine from the walls of our show next year.

Quilts can be any size, from potholder to king.
 They can be any color red, and have any proportions of red and white.
 They can be any technique, and any style. They can be brand new, or
 a treasured heirloom. They can be made for a loved one, or donated
 to Community Service.

Please join in the celebration! For more information, contact Karen
 Michaels: 509-412-1571, karen@pkmichaels.com.



Miss Daisy Quilting
 Custom free motion and hand-
 guided longarm quilting services

 Jodi Hassell
 (509) 378-2586
 missdaisyquilting
 missdaisyquilting@gmail.com

**15% off
 the quilting
 of your first
 quilt.**

Jan Yancey

**Art & Design
 Custom Longarm
 Quilting**

509.551.3982
 pansypainter@gmail.com
 handquilter.com/jan-yancey

BLACK and WHITE Challenge Reminder

Tap into your creativity with shape and quilting patterns. Next
 year's challenge quilts will set off the vibrant colors of our show's
 theme, and be a strong contrasting statement in themselves.

Here are a few clarifications on the rules:

1. The item must be at least 75% black and white.
2. One additional color is allowed, including gray.
3. Any shape, any fabric, any embellishment is allowed, but all must follow the theme.
4. Maximum circumference of 160 inches.
5. Prints can be used but must "read" as either black, white, or your chosen color.

Clarification on choosing your color, if you desire to use one:

If we think of the color wheel as 12 hues (red, orange, yellow, chartreuse, green, spring green, cyan, azure, blue, violet, magenta and rose), and everything else as a tint or shade of one of those, then you can incorporate tints and shades as long as the parent hue is recognizable, and only one parent hue is used.

The Sewciety Girls can't wait to see our collective imagination in black and white. We hope you enjoy it!

Tri-City Quilters Guild January 2022 Exhibition at Gallery at the Park

Registration Form

Important dates and details to remember:

- Monday, November 29, 2022 – Firm registration form deadline. Mail this form to Deb Snider at 4356 Corvina Street, Richland WA 99352; email it to her at debsniderart@gmail.com, or deliver it at the November TCQG meetings. Keep a copy. Because of new administrative requirements at the gallery, if we have not received your registration by the November 29 deadline, we will not be able to include your work in the exhibition.
- Items for Sale – Allied Arts/Gallery at the Park assesses a 35% commission on sales. Keep this in mind when pricing your items. If you do not wish to sell, put NFS (not for sale) with a value for insurance.
- Monday, January 3, 2022, 10am-noon – Quilt intake at the Gallery at the Park, 89 Lee Boulevard, Richland. If you cannot bring your items during these hours, please have a friend deliver them. We will install the work on the same day, after noon.
- Tuesday, January 4, 2022, Exhibition opens at noon
- Sunday, January 9, 2022, 1-3pm - Public Artist Reception
- Saturday, January 29, 2022, End of exhibition at 4pm
- Sunday, January 30, 2022, 10am-2pm - Take down. All quilts must be picked up by 2:00 pm

Print clearly; details about the artwork will show up on the information card for each quilt.

Your name: _____

Address: _____

Email: _____

Phone: _____ Alternate Phone: _____

List of items (Include title, materials/techniques, size, price or value) Example: "My Dream Quilt;" cotton fabric, beads; hand and machine stitching; 40x50 inches; \$500.00. Prioritize your entries; if we have a large turnout, we will use the lowest numbers first. Members are limited to a maximum of three entries because of restrictive exhibition space.

1. Title: _____

Materials/Techniques: _____

Size: _____ Price (or Value for Insurance): _____

2. Title: _____

Materials/Techniques: _____

Size: _____ Price (or Value for Insurance): _____

3. Title: _____

Materials/Techniques: _____

Size: _____ Price (or Value for Insurance): _____

Create a Story-Telling Quilt

*A recap of the
Story Telling
Quilt Project*

AN UNOFFICIAL/EXTRA-CURRICULAR CHALLENGE FOR 2021
ISSUED BY DEB SNIDER, BASED ON HER TROVE OF FABRIC IMAGES

A smorgasbord of fabric images will be on offer at WBQM
Monday May 17 at the TCQG mini-meet 10-2
Friday May 21 and Saturday May 22 during public hours 10-4

- The pieces are relatively small and best-suited to raw-edge applique. Many are already fused to Wonder Under and rough cut or fussy cut; some still need a fusible web. They are arranged in categories that contain numerous colors and poses.
- Members of Tri-City Quilters' Guild and White Bluffs Quilt Museum may take up to 20 pieces for free. Non-members may take up to 10 pieces for free. Additional motifs may be purchased starting in June.
- Use your images along with your own fabrics and embellishments to create a sandwich up to 24x24 inches. Its story can be fictional, fantastical, whimsical, serious, silly, documentary, touching, or tragic. You can use your own biography or your own imagination or you can borrow from books, music, movies, opera, or theater.
- Compose a verbal companion to display with your quilt and “explain” it, up to 150 words in prose or poetry.
- Attend instructional workshops* for inspiration and information:

Evolution of an Art Quilter

Saturday May 22 from 2:30-4:00 at WBQM/FREE

Fearless Creativity

Saturday Jun 5 from 2:30-4:00 at WBQM/\$10

Design BOOTcamp (Bring Out Our Talent)

Saturday June 19 from 2:30-4:00 at WBQM/\$10

Brainstorming the Word Stories

Saturday July 17 from 2:30-4:00 at WBQM/\$10

Exhibit your finished piece at
The Gallery at the Park in January 2022

*Reservations required: register with Deb (debsniderart@gmail.com) and pay at the door.

PO Box 215, Dept. QP
Richland, WA 99352

Return Service Requested



Pretty as a Postcard

Join the cadre of postcard artists whipping up fundraiser postcards to be for sale at \$8 each (new price) in the Quilt's Show's newly named "Round Tuit Room." (See pg 7.)

NOVEMBER

Second Monday Board Meeting 11/8

6:30 pm

White Bluff's Museum

294 Torbett Street, Richland

(All members are welcome.)

Third Monday AM Meeting 11/15

10 am Social Time & Refreshments

10:30 am Meeting & Program

Hillspring Church 1153 Gage Blvd, Richland

Third Monday PM Meeting 11/15

6:30 pm Social Time & Refreshments

7 pm Meeting & Program

Hillspring Church 1153 Gage Blvd, Richland

DECEMBER

Sorry, no meeting or get together possible this year.

Don't forget to renew
your membership!
You can do it right [here](#).

